

# Atlanta

The streetcar's future is on the ballot

DREAM IT, PRINT IT  
Inside the city's 3D printing revolution

## 20 GREAT SANDWICHES

FROM BANH MI TO BLT, WHERE TO FIND YOUR FAVES



➔ Crispy Maine Lobster BLT from Chops

➕ JAY SWIFT'S NOBLE FIN THRILLS

SHOPPING GUIDE TO THE WESTSIDE

DWIGHT HOWARD COMES HOME TO THE HAWKS

➔ NOVEMBER 2016 • \$5.95



0 73361 18738 3 11 >



# 2016 | MAGNOLIA DESIGNER SHOW HOUSE



MEDIA SPONSORS

**Atlanta**  
MAGAZINE

Atlanta  
MAGAZINE'S  
**HOME**

*Fleetwood*  
Security and Electronic Services, Inc.

 **JamesHardie**

**ADAC**

 **AmericasMartAtlanta**

  
**Barnsley**  
DESIGN

**FLOOR  
DECOR**  
TILE • WOOD • STONE

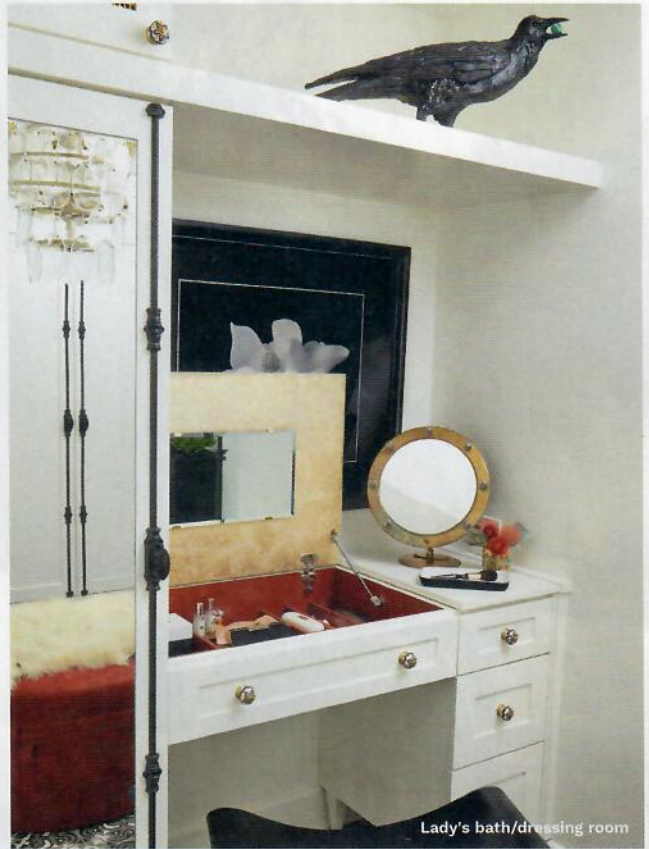
BENEFICIARY

  
Advocates  
for Children





Gentleman's bath



Lady's bath/dressing room

## LADY'S BATH ■ GENTLEMAN'S BATH

**T**he lady's bath is a large space, so Atlanta designers Jenny and Eric Rothman decided to create an elegant and sophisticated oasis that would serve as both a bathroom and dressing room. Walls and cabinets are white, allowing other elements in the room to take center stage. A patterned concrete tile floor and handcrafted hardware hearken to old Paris, while metal entry and shower doors, and black plumbing fixtures give the space a modern and edgy feel. A white, sculptural freestanding tub adds drama, and a red woven ottoman provides color and texture. Artwork includes abstracts by Michael Matascik and a large, black-and-white magnolia print by Cartersville photographer Lynn Henderson.

For the gentleman's bath, Atlanta designers Joann Kandrac and Kelly Kole drew inspiration from the homeowner's military background. They installed navy tile floors, a textured navy-and-white-patterned wallcovering, and burnished brass light fixtures and accessories. The shower features a combination of Moroccan and subway tiles on the walls, and marble tiles configured in a chevron pattern on the floor. Closet doors, which the designers updated with elegant moldings and a vintage brass doorknob, conceal state-of-the-art storage space. Hanging prominently on the wall is an original painting of the historic Coca-Cola sign in downtown Cartersville by Alabama artist Dirk Walker.

### LEFT TO RIGHT

- Custom cabinetry by Wood Cabinet Design; plumbing fixtures from Brizo; tile from Crossville Tile; Toto toilet and washtlet by European Kitchen & BathWorks; chandelier and vanity seat stool from Noir Furniture; custom window treatment and ottoman fabrication by Custom Creations; custom concrete countertop and shower bench by Thornton Concrete Studio; abstract art by Michael Matascik

- All plumbing and vanity hardware from Brizo; silestone countertop from Cosentino; Kohler sink from PIRCH; vanity from Highland Design Gallery; Toto toilet by European Kitchen & BathWorks; tile from Crossville Tile; wallpaper from Thibaut, installed by Bob Bachman; lighting from Currey & Co.; arrangement on vanity by Gregory Joseph Designs; paint labor by Verge & Associates; window treatment fabric from Kravet, fabricated by Custom Creations; original art by Dirk Walker from DK Gallery; closet doors by Mitch Mitton Theme Design; closet interior by California Closets; vintage rug from Moattar Ltd.; blackbird statue, *The Thief*, by Barry Henderson, available at BBDG Store

- Cabinet hardware knobs from etsy.com; cremone bolts from Van Dyke's Restorers; brass cylinder knobs from Anthropologie; custom metal shower door by Forge Fire Design; photograph by Lynn Henderson; paint labor by Tim Smith and Kyle Russell; sconce lighting from Lumens; fabric from Kravet



MORRIS ROOM GREY  
SW 0037



ALABASTER  
SW 7008



CRABBY APPLE  
SW 7592